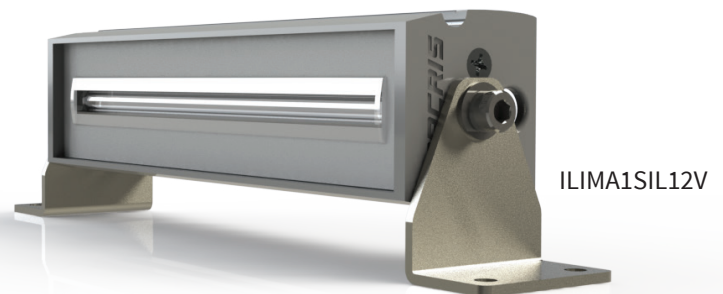


Alpha 7” LED Spreader Light Bar

The Alpha LED Lightbar was designed from the ground up to usher in the latest in LED lighting technology, blending amazing aesthetics and performance in a novel package that is slim, clean, and incredibly robust. Designed, Engineered, and Manufactured in the USA, every part of the construction of your new Alpha LED Lightbar is meticulously scrutinized. Our new Panoramic Spot Optics, a first in the industry, paired with a US-made robust aluminum housing creates a marine LED light fixture unlike anything before. Various mounting options and hidden features make the Alpha series incredibly flexible and adaptable to any application, from marine to off-road use to industrial applications.



FEATURES & BENEFITS

- Rugged marine grade anodized aluminum housing
- Sleek modern design aesthetics
- Panoramic Spot Optics delivers bright, wide-angle coverage
- UV stable clear acrylic lens wont crack or craze due to sun exposure
- Fully potted and sealed with no mechanical fasteners for waterproofness
- Air-free design means no fogging and no chance of water intrusion
- Advanced automatic thermal rollback prevents overheating
- Different mounting options available



Photo: Grady White

Advanced LED Solutions

Imtra is at the forefront in the development of LED products for today's marine market. We are proud to offer a family of first-in-class high flux LED lights that combine proprietary drive electronics with advanced optics and efficient thermal management techniques. Imtra PowerLEDs let builders and boat owners enjoy all the advantages of the latest LED technology, backed by Imtra's expertise and support. To see our full line of LED products, visit www.imtra.com.

An excellent choice for:

- Fishing boats
- Center-consoles
- Walk-arounds
- Express cruisers

www.imtra.com



Photo: Pursuit Boats

PRODUCT DETAILS

Visual

Finish Options



Black Anodized Aluminum
IP67



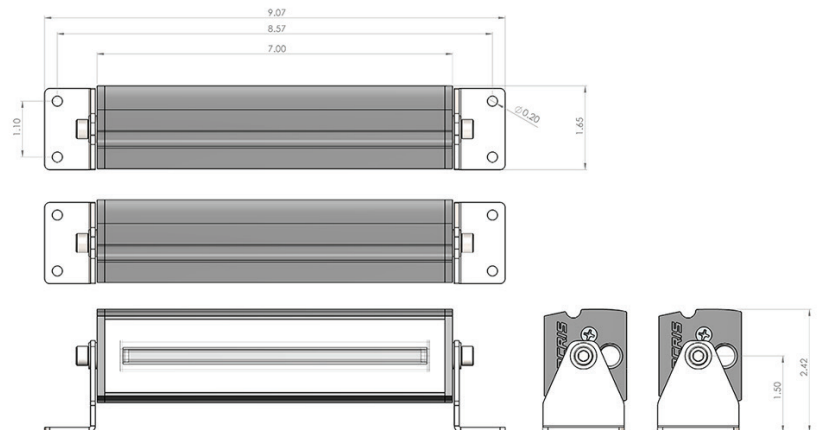
Silver Anodized Aluminum
IP67

Mechanical

Housing Material Anodized Aluminum

Mounting Method S.S. Mounting Brackets

Dimensions



Electrical

Power Consumption 15W

Voltage 10-15VDC

Fixture Lumens 1455 lm

Protections Transients, Reverse Polarity, Thermal Lighting

Certifications



Designed & Assembled

